

GALERIE JOCELYN WOLFF
43, RUE DE LA COMMUNE DE PARIS (KOMUNUMA)
93230 ROMAINVILLE
T: +33 1 42 03 05 65
WWW.GALERIEWOLFF.COM

ARCO 2022

PREVIEW

23 - 27 February
booth 9C05

DIEGO BIANCHI
KATINKA BOCK
MIRIAM CAHN
HARALD KLINGELHÖLLER
IRENE KOPELMAN
ISA MELSHEIMER
SANTIAGO DE PAOLI
FRANCISCO TROPA
FRANZ ERHARD WALTHER
CHRISTOPH WEBER

DIEGO BIANCHI

BORN IN 1969 IN BUENOS AIRES, ARGENTINA
LIVES AND WORKS IN BUENOS AIRES, ARGENTINA



Diego Bianchi
Inflation 1, 2021
Inv.# DB/V 1
full HD video

11 min. 58 sec.
ed. of 3 + 1 A.P.
<https://vimeo.com/613461955>



Diego Bianchi
Inflation 3, 2021
Inv.# DB/V 3
full HD video

12 min. 52 sec.
ed. of 3 + 1 A.P.
<https://vimeo.com/613473612>

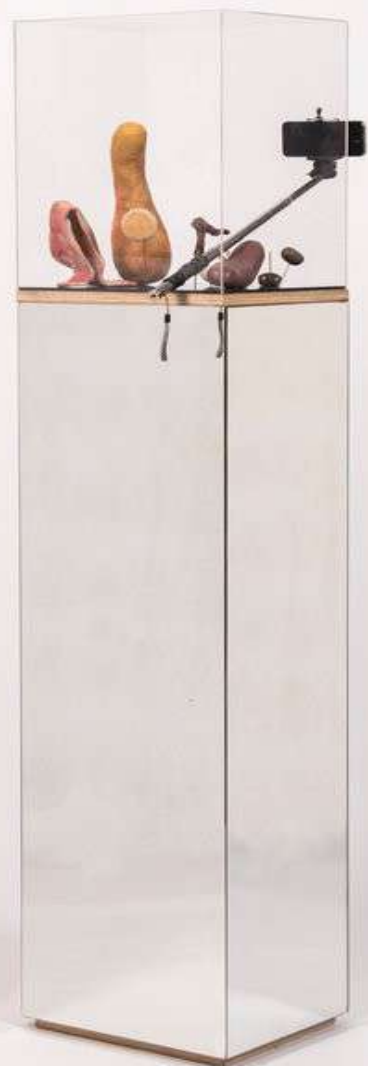


Diego Bianchi
Software, 2021
Inv.# DB/S 149
stainless steel , epoxy clay, plastic tank, cables, plastic
hose, rubber
150 x 93 x 130 cm



Diego Bianchi
Software, 2021

detail



Diego Bianchi
Still life selfie, 2017
Inv.# DB/S 70
epoxy putty, egg, resin, plastic, paint, acrylic, selfie stick,
shoes, cookie, cellphone, wood, mirror

162 x 28 x 34 cm
unique

KATINKA BOCK

BORN IN 1976 IN FRANKFURT AM MAIN, GERMANY
LIVES AND WORKS IN PARIS, FRANCE

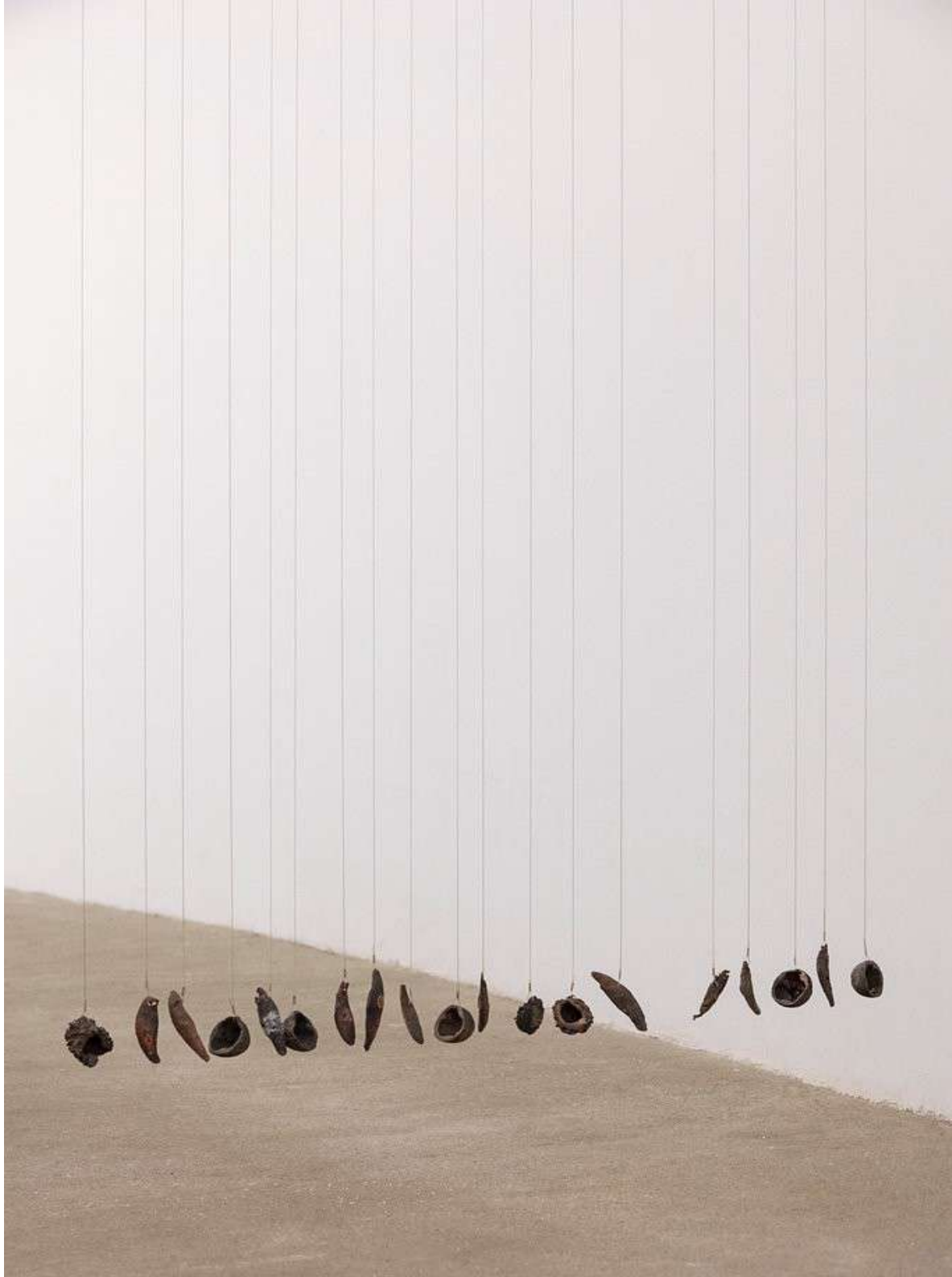


Katinka Bock
Fernanda Newton, 2019
Inv.# BOC/S 568
bronze, wire

19 elements
unique



Katinka Bock
Fernanda Newton, 2019
Inv.# BOC/S 569



Katinka Bock
Fernanda Newton, 2019
Inv.# BOC/S 569



Katinka Bock
Achab, 2019
Inv.# BOC/S 556
ceramic, elastic strap

1 ceramic (top left): 47 x 16 x 10 cm - 5 kg
2 ceramic (top right): 34 x 16 x 13 cm - 4.5 kg
3 ceramic (bottom right): 45 x 14 x 13 cm - 4 kg
4 ceramic (bottom left): 34 x 13 x 10 cm - 2 kg



Katinka Bock
Achab, 2019
Inv.# BOC/S 556

exhibition view at Pivô, Sao Paulo, Brazil, 2019



Katinka Bock
Grosse Kreise, blau, 2014
Inv.# BOC/S 227
ceramic, steel, fabric

30 x 100 x 90 cm
unique



Katinka Bock
Grosse Kreise, blau, 2014
Inv.# BOC/S 227



Katinka Bock
Grosse Kreise, blau, 2014
Inv.# BOC/S 227



Katinka Bock
Grosse Kreise, blau, 2014
Inv.# BOC/S 227



Katinka Bock
Grosse Kreise, blau, 2014

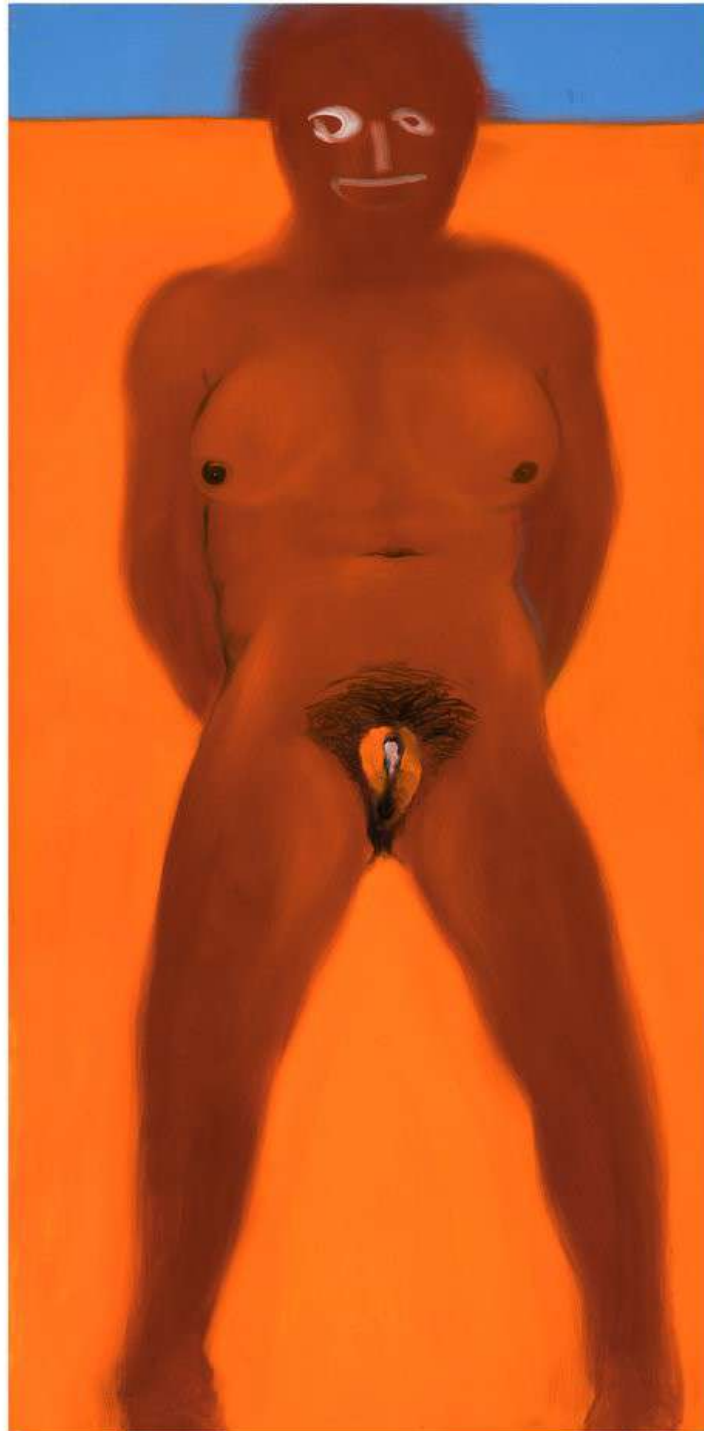
MIRIAM CAHN

BORN IN 1949 IN BASEL, SWITZERLAND
LIVES AND WORKS STAMPA, SWITZERLAND



Miriam Cahn
WAS MICH ANSCHAUT, 1.11.19. 2019
Inv.# CAH/P 2757
oil on canvas

190 x 200 cm



Miriam Cahn
schwarzekriegerinich, 3. -1
20.5.18, 2018
Inv.# CAH/P 2652
oil on wood
175 x 80 cm



Miriam Cahn
ROHI, 16. + 25.08. + 02.10. 2016, 2016
Inv.# CAH/P 2466
oil on canvas

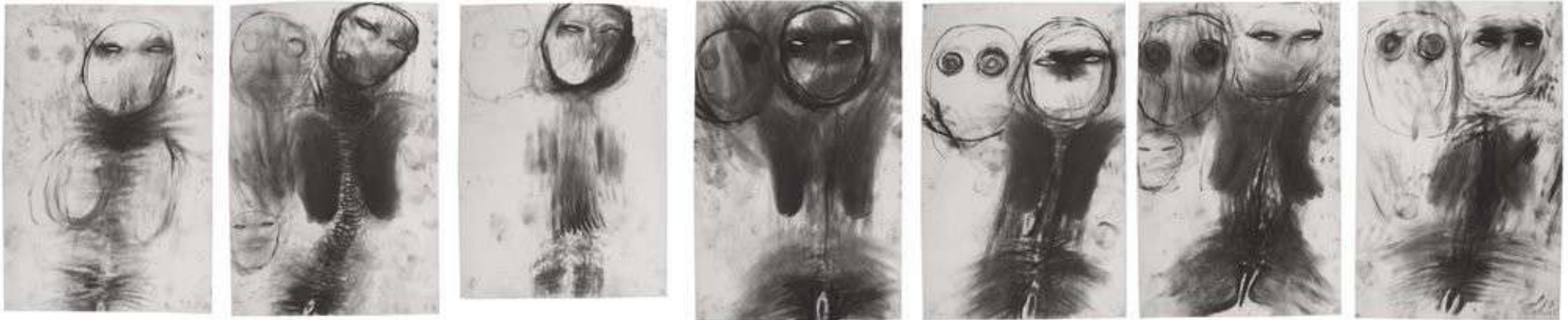
175 x 120 cm



Miriam Cahn
o.t., 4.6. + 9.8.08, 2008
Inv.# CAH/P 2735
oil on canvas

151 x 276 cm

3493



Miriam Cahn
without title, m. 5, 1983
Inv.# CAH/D 595
chalk on parchment

100 x 460 cm ca (overall)
7 elements
1. 95 x 64 cm
2. 97 x 64.5 cm
3. 92 x 64.5 cm
4. 100 x 64.5 cm
5. 100 x 64.5 cm
6. 100 x 64.5 cm
7. 100 x 65 cm
unframed



Miriam Cahn
was mich anschaut, 14.02.1994
Inv.# CAH/D 174
pigments, egg and water on paper

4 paintings:
84 x 104 cm, 83 x 73 cm, 94 x 111.5
cm, 86 x 64 cm, unframed

HARALD KLINGELHÖLLER

BORN IN 1954 IN METTMANN, GERMANY

LIVES AND WORKS IN DÜSSELDORF AND KARLSRUHE, GERMANY



Harald Klingelhöller
Ich bin hier, Du bist hier
Schwarze Schattenversion dreifach in schwarzer Raumecke
einfach, neben weißer Raumecke einfach
mit weißer Schattenversion dreifach, schwebend
(M, 1:1:1:8), 2019
Inv.# HK/S 33
steel sheet, primer, spray paint, steel round bars, steel
cable

63x 56 x 30 cm, steel round bar hung at 200 cm height



Harald Klingelhöller
Ich bin hier, Du bist hier
Schwarze Schattenversion dreifach in schwarzer Raumecke
einfach, neben weißer Raumecke einfach
mit weißer Schattenversion dreifach, schwebend
(M, 1:1-1:8), 2019
Inv.# HK/S 33

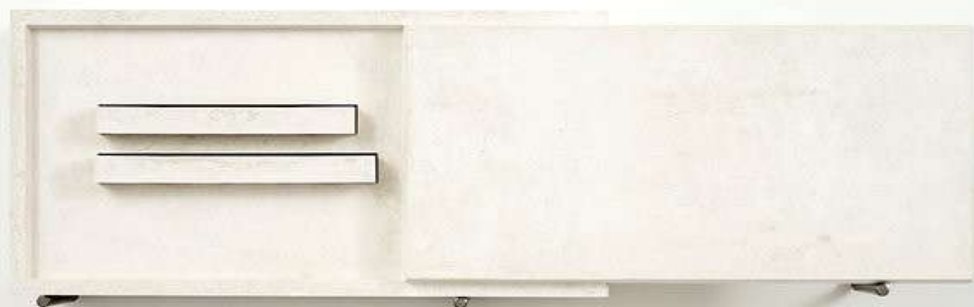


Harald Klingelhöller
*Waldrand gespiegelt, Schrankversion (edge of a forest
mirrored, cabinet version)*, 2006
Inv.# HK/S 22
plaster and steel

39 x 26 x 112 cm



Harald Klingelhöller
*Waldrand gespiegelt, Schrankversion (edge of a forest
mirrored, cabinet version), 2006*
Inv.# HK/S 22



Harald Klingelhöller
*Waldrand gespiegelt, Schrankversion (edge of a forest
mirrored, cabinet version), 2006*
Inv.# HK/S 22

IRENE KOPELMAN

BORN IN 1974 IN CÓRDOBA, ARGENTINA
LIVES AND WORKS IN AMSTERDAM, THE NETHERLANDS



Irene Kopelman
Gully K, 2020
Inv.# IK/P 25
oil on canvas

300 x 125 cm



Irene Kopelman
Gully K, 2020
Inv.# IK/P 25

detail

ISA MELSHEIMER

BORN IN 1968 IN NEUSS, GERMANY
LIVES AND WORKS IN VIENNA, AUSTRIA



Isa Melsheimer
Studio 8, 2013
Inv.# MEL/S 50
glass, silicone, polycarbonate

27 x 18 x 43 cm
unique



Isa Melsheimer
Studio 8, 2013
Inv.# MEL/S 50
glass, silicone, polycarbonate

27 x 18 x 43 cm
unique



Isa Melsheimer
Studio 8, 2013
Inv.# MEL/S 50
glass, silicone, polycarbonate

27 x 18 x 43 cm
unique



Isa Melsheimer
Studio 8, 2013
Inv.# MEL/S 50
glass, silicone, polycarbonate

27 x 18 x 43 cm
unique

SANTIAGO DE PAOLI

BORN IN 1978 IN BUENOS AIRES, ARGENTINA
LIVES AND WORKS IN STAMFORD, USA



Santiago de Paoli
7 green lights, 2021
Inv.# SDeP/P 265
oil on felt fabric

59 x 47 cm

FRANCISCO TROPA

BORN IN 1968 IN LISBON, PORTUGAL

LIVES AND WORKS IN LISBON, PORTUGAL



Francisco Trope
Antipode, 2018
Inv.# FT/S 181
golden leaf on wood

33 x 11.5 x 11.5 cm
ed. 1/4 + 1 A.P.



Francisco Trope
Antipode, 2018
Inv.# FT/S 181



Francisco Tropa
Antipode, 2018
Inv.# FT/S 181



Francisco Tropa
Tête, 2017
Inv.# FT/S 137
blown glass

20 x 37 x 32 cm
unique out of a series of 2 + 1 A.P.



Francisco Tropa
Tête, 2017
Inv.# FT/S 137



Francisco Tropa
Tête, 2017
Inv.# FT/S 137



Francisco Tropa
Terrace, 2017
Inv.# FT/S 131
bronze, brass, silkscreen on cotton fabric, glass, metal

ed. 3/4 + 2 A.P.



Francisco Tropa
Terrace, 2017
Inv.# FT/S 131

FRANZ ERHARD WALTHER

BORN IN 1939 IN FULDA, GERMANY
LIVES AND WORKS IN FULDA, GERMANY



Franz Erhard Walther
100 m Linie, 1963
Inv.# FEW/S 4
Hemp cord

37 x 15 x H:5 cm, 100 m long
unique



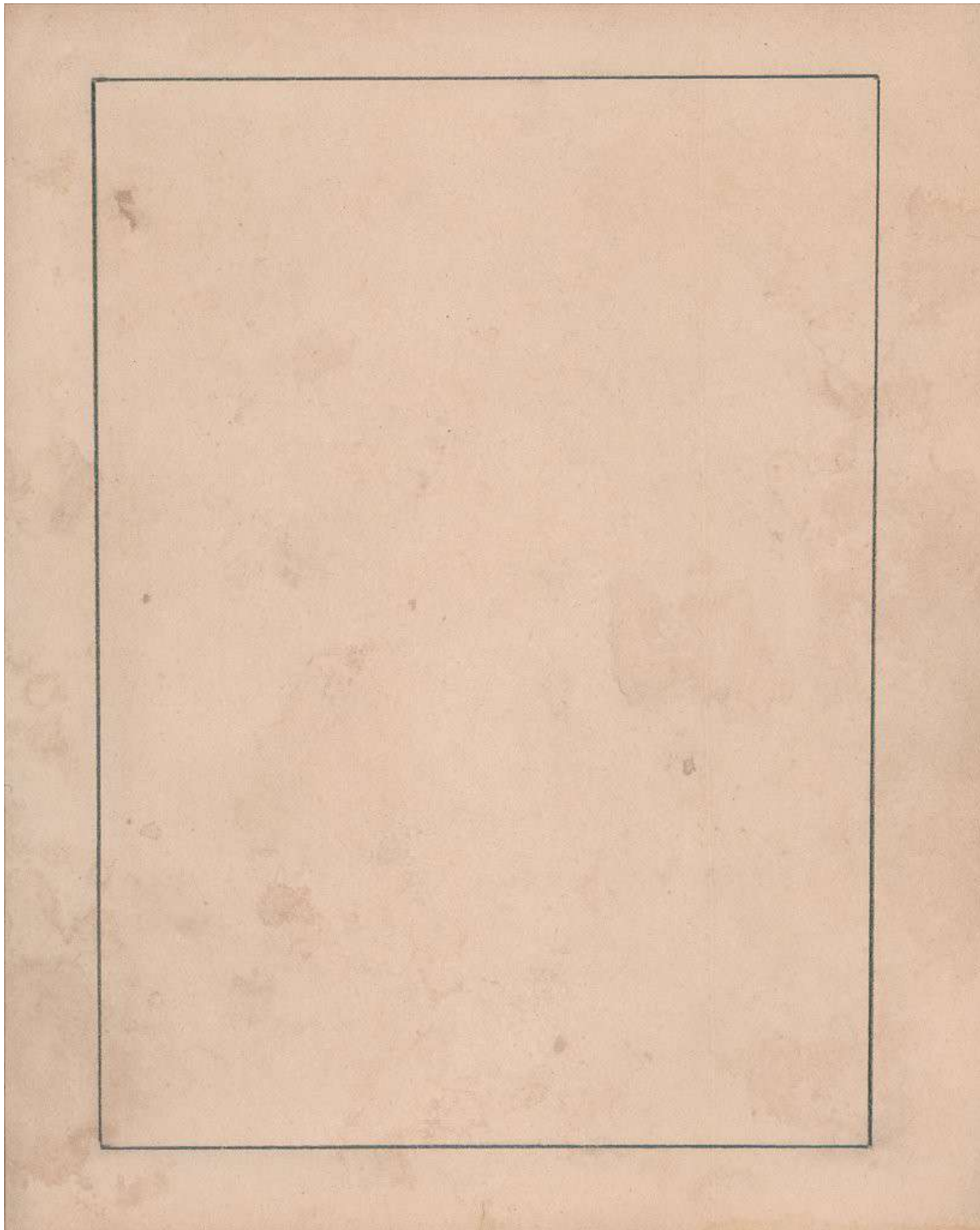
Franz Erhard Walther
100 m Linie, 1963
Inv.# FEW/S 4

Activation of 100 m Linie in Jörg Immendorff and Chris Reinecke's apartment with Joseph Beuys, Jörg Immendorff, Chris Reinecke, Verena Pfisterer. Piece handled by Charlotte Moorman, 1966.



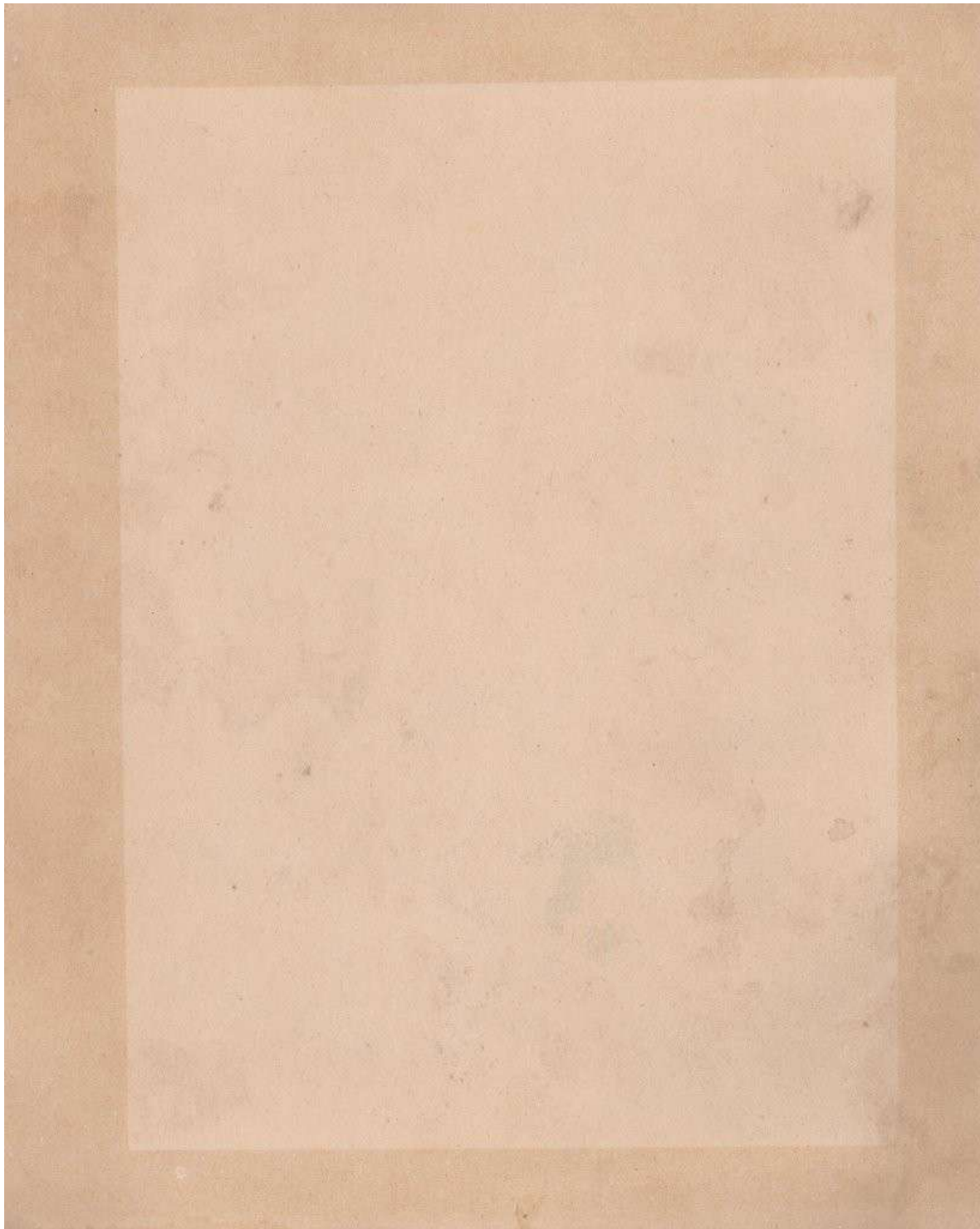
Franz Erhard Walther
100 m Linie, 1963
Inv.# FEW/S 4

Activation of 100 m Linie in Jörg Immendorff and Chris Reinecke's apartment with Joseph Beuys, Jörg Immendorff, Chris Reinecke, Verena Pfisterer. Piece handled by Charlotte Moorman, 1966.



Franz Erhard Walther
Rahmenzeichnung, 1962
Inv.# FEW/D 136
watercolour and pencil on brownish paper

double sided drawing
26.6 x 21.1 cm.
framed: 44 x 33 x 2 cm
recto



Franz Erhard Walther
Rahmenzeichnung, 1962
Inv.# FEW/D 136
verso

CHRISTOPH WEBER

BORN IN 1974 IN VIENNA, AUSTRIA
LIVES AND WORKS IN VIENNA, AUSTRIA



Christoph Weber
Burst, 2021
Inv.# WEB/S 158
limestone, concrete

28 x 22 x 17 cm
unique



Christoph Weber
Burst, 2021
Inv.# WEB/S 158



Christoph Weber
Burst, 2021
Inv.# WEB/S 157
limestone, concrete

30 x 22 x 18 cm
unique

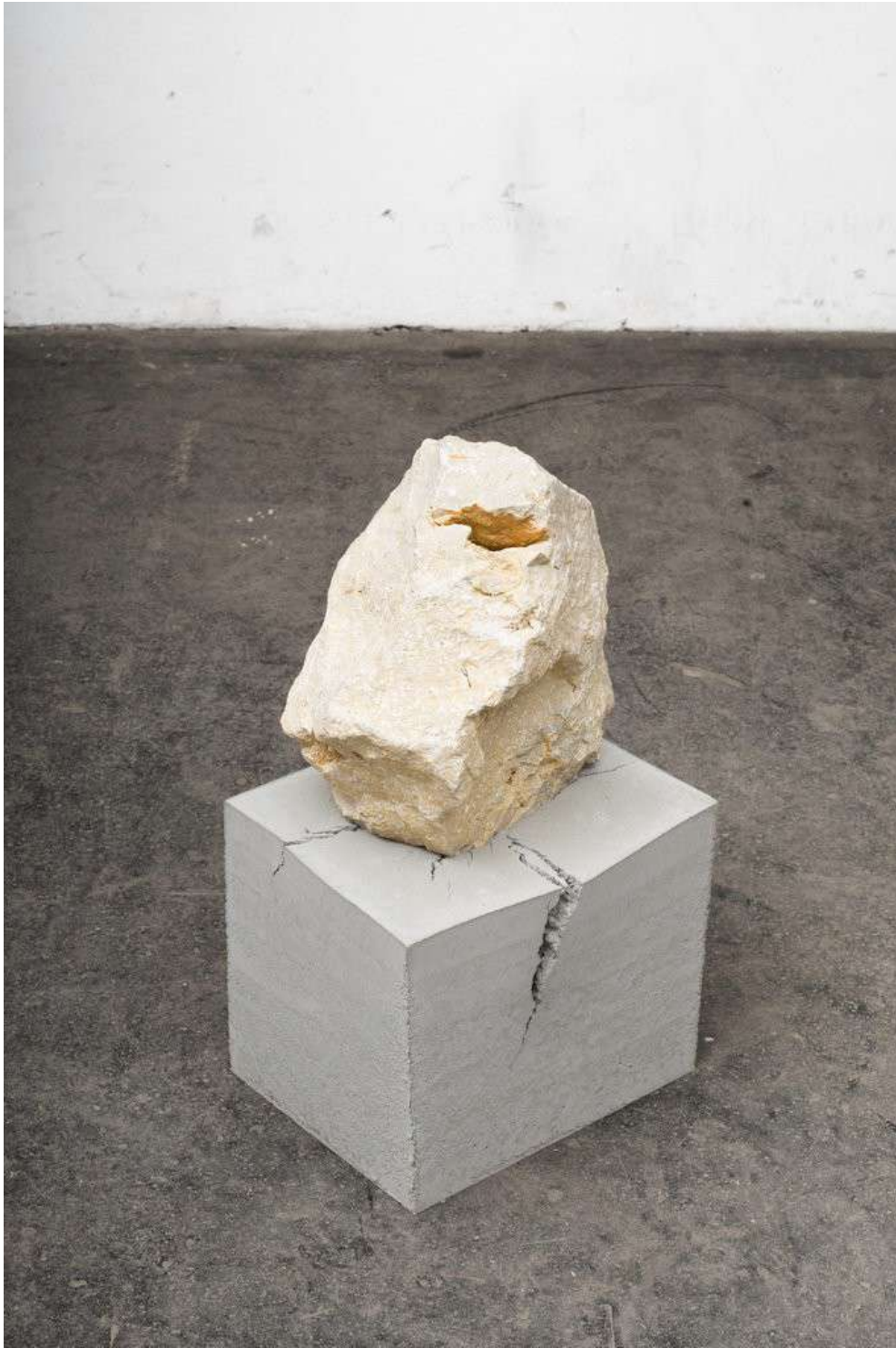


Christoph Weber
Burst, 2021
Inv.# WEB/S 157



Christoph Weber
Burst, 2022
nv.# WEB/S 153
limestone, concrete

75 x 42.5 x 40 cm
unique



Christoph Weber
Burst, 2022
nv.# WEB/S 153
|