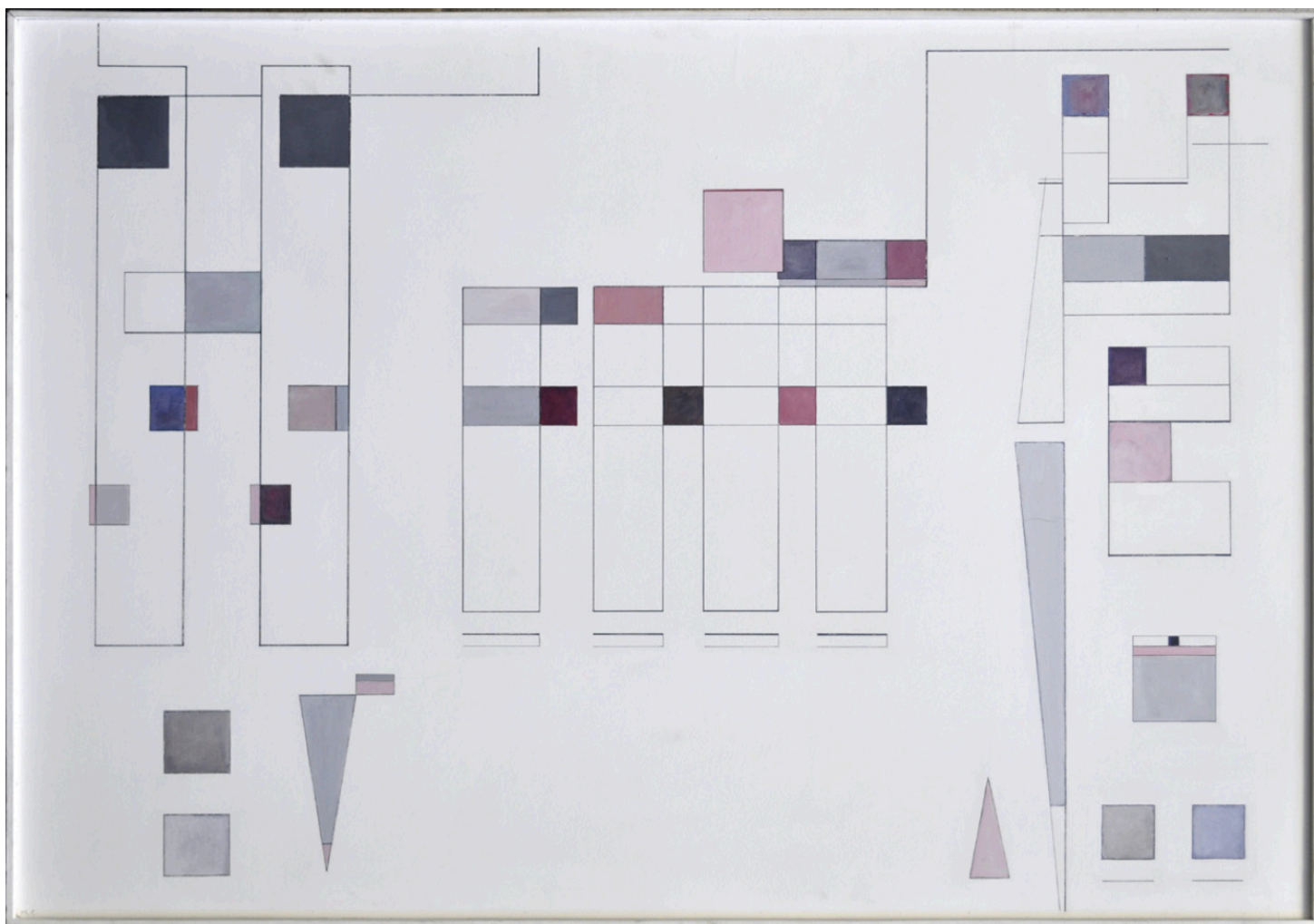


Galerie Jocelyn Wolff Independent New York 2021

Marcelle Cahn & Elodie Seguin

In the context of our participation in the Independent fair 2021 in New York, Galerie Jocelyn Wolff has chosen to present two artists from the French scene of geometric abstraction, Marcelle Cahn (Strasbourg 1895 - Neuilly-sur-Seine 1981) and Elodie Seguin (born in 1984 in Paris).

Marcelle Cahn, born in Alsace, German at the time, first studied art in Berlin (notably with Lovis Corinth), where she met Herwarth Walden (Der Sturm review), who was then linked to the Russian constructivists, before settling in Paris, where she worked with Ferdinand Léger and Amédée Ozenfant.

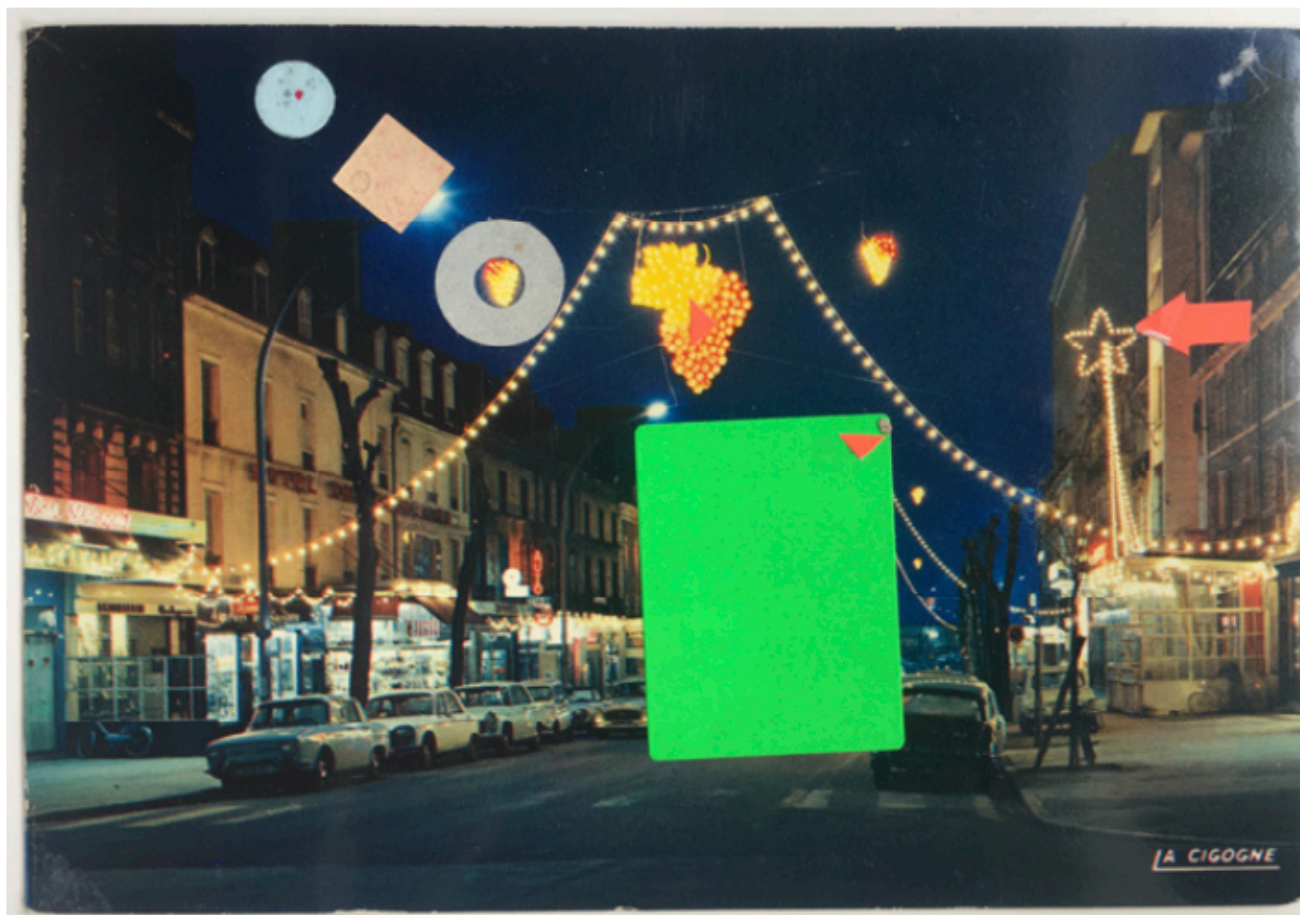


Marcelle Cahn, Variante horizontale, 1964-1972, oil on wood .114 x 162 cm

She exhibited in New York for the first time in 1926, at the International Exhibition of Modern Art by the Société Anonyme (founded by Katherine Dreier, Marcel Duchamp and Man Ray) at the Brooklyn Museum, a major vector for the diffusion of the European avant-garde in the United States. It is of significant importance to show her work in New York nearly 100 years later.

Seeking to understand Marcelle Cahn's artwork and career, what strikes first is her discretion. In 1976, Pierre Gisling produced a remarkable documentary film for RTS (Swiss radio television), where the artist's extreme finesse and sensibility is exposed, focusing on the incredible collage work that occupied her towards the end of her life, when she no longer had a studio and essentially worked from her bed.

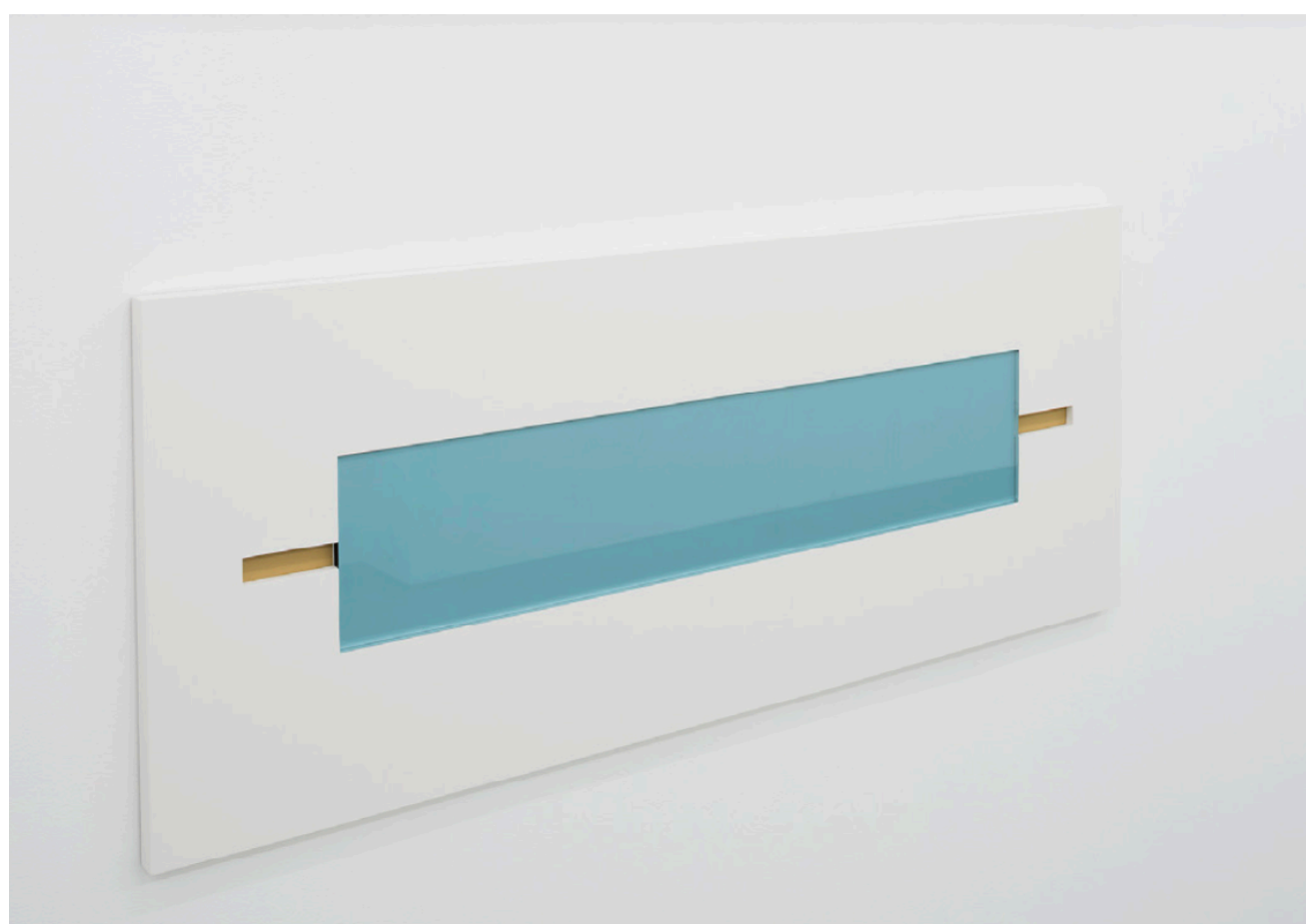
With RTS' authorisation, Jocelyn Wolff Galerie has produced a version of this film with English subtitles and made it available to the public (see the links at the bottom of the document).



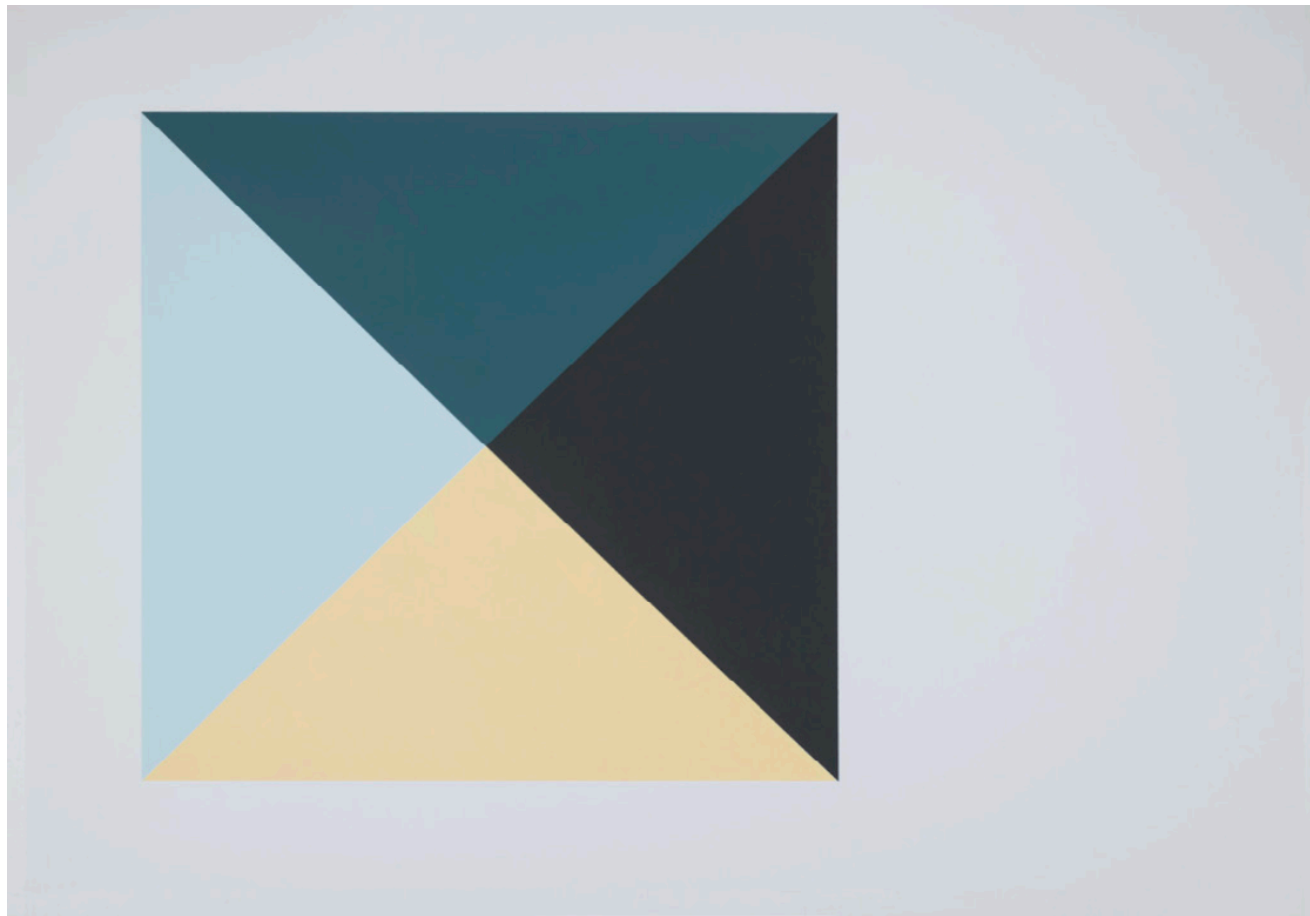
Marcelle Cahn, Sans titre, collage on postcard, 10 x 15 cm approx., framed, 47 x 35.5 cm

The artist and critic Michel Seuphor, co-founder of Cercle et Carré (a group which Marcelle Cahn belonged to, along with her friends Arp, Mondrian, Sonia Delaunay, Kandinsky, etc), outlines Marcelle Cahn's collage work from the 1960s-70s drawing a connection between Op Art and Pop Art. For the presentation at Independent NY, Jocelyn Wolff Galerie will show certain pieces from the exhibition project of 1972 at the Musée de Dijon, in dialogue with an emblematic series of collages on prints. The presentation will also include her largest known work Variante Horizontal (1964-1972) and representative of her work on white backgrounds from the 1950's and 1960's.

Along the work of Marcelle Cahn, Galerie Jocelyn Wolff is proud to present the work of Elodie Seguin (b. 1984), artists represented by the gallery since she graduated from the Ecole des Beaux-Arts in Paris a decade ago.



Elodie Seguin, Résistance 5, 2017, wood, ink, polyurethane paint, plaster, plexiglas , 39.3 x 95 x 1.8 cm



Elodie Seguin, White Volume (L), 2018, acrylic paint and inks on paper, 55 x 76 cm

Elodie Seguin's demanding visual research calls colour into question (when colour operates as the drawing which it covers up), and is located in an intermediary zone between sculpture, drawing and painting. For the artist, the use of colour must be a product of necessity in this respect, but also with regard to the dialectical relationship between abstraction and figuration where we find the comparison with Marcelle Cahn to be particularly fruitful. As Marcelle Cahn's collages on postcards create a tension between "the overblown image" and the relationships of geometrical composition, the idea of the object in Elodie Seguin's work appears elliptically "under" the geometrical composition.

For Independent NY, we have selected a representative body of Elodie Seguin's work spanning several years, including research on transparency and the elliptical relationship to the object.

Elodie Seguin recently exhibited at the MACBA in Buenos Aires in 2019.

Her main projects, often created in situ, and her exhibitions, are systematically revisited on the following website: <https://elodieseguin.ultra-book.com>

Links:

MARCELLE CAHN:

[Documentary on Marcelle Cahn for the programme "Les Clés du regard" in 1976 \(password: « privatemarcelle »\)](#)

Galerie Jocelyn Wolff is currently working on Marcelle Cahn's catalogue raisonné. We would like to thank M. Serge Lemoine, art historian, and Lahumière Gallery in Paris, for their advice and support.

ELODIE SEGUIN:

[Elodie Seguin - At the Studio - short film produced by Galerie Jocelyn Wolff](#)